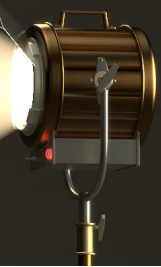


Soul Factor

Working With Sustainability



Starter Questions

- How important is sustainability to you and why?
- Where is your firm doing well on ESG issues? What issues do you think need addressing?
- How do you connect emotionally with talk of saving the planet?

Talk Discussion

Working with sustainability by Lynette Leong

Any comments, questions, insights from the talk?

The S O U L of sustainability

1. STEWARDSHIP

Lynette describes how God directs people made in his image to care for his earthly creation. This mandate is to work, live and think sustainably. When our identity is as God's children we treat his good and precious gift with respect, caring for it so its beauty and enjoyment lasts.

- How would seeing God as owner and provider of our earth change your attitude to how you see who you are in the world? How would it change your work priorities and responsibilities?

2. ORIGINAL ECONOMIC LAWS

The Bible contains Sabbath & Jubilee laws that ensure sustainability of economic use by resting land every 7 years and preventing excessive wealth staying in the hands of the rich by returning land and cancelling debt every 50 years (Jubilee).

- How might these laws apply today? What might be the impact?

3. UNDERSTANDING

- Why do you think sustainability matters to us and how might your actions matter to God?
- How much do you know the ESG (Environmental, Social, Governance) impacts of your work?

4. LOVE

One of the ways we love others by taking care of the world we share and by being socially responsible in our actions so that we create the conditions for dignified human life.

- What does our stewardship of resources show about who or what we love the most?

Next steps

Chat to a Christian colleague and ask your questions

See soulfactor.org for further resources in your region